

San Joaquin Basin-wide Feasibility Study Update

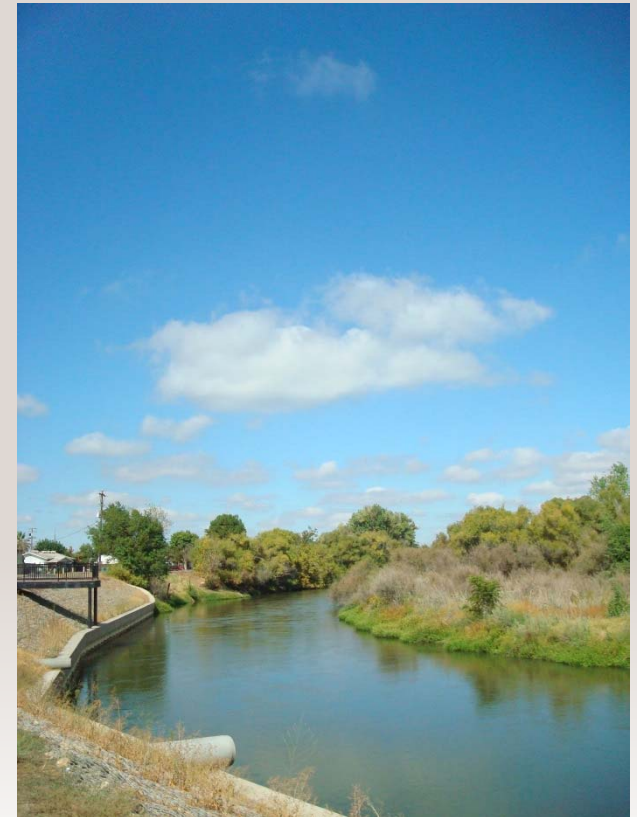
April 29, 2015

Presented by:

Eric Tsai

DWR, San Joaquin BWFS Planning Lead

**Upper San Joaquin Regional Flood
Management Planning Program Meeting**

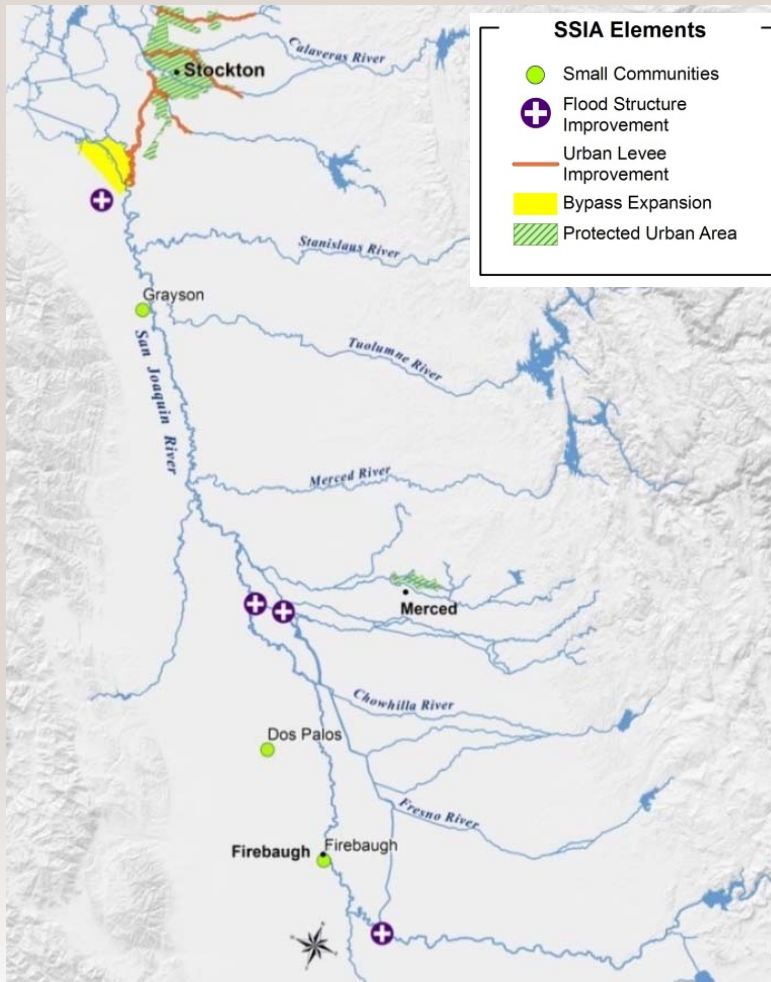


2017 ROADMAP

[TRACKING NUMBER]



CVFPP Background



Basin-Wide Feasibility Studies
Sacramento and San Joaquin River
Basins

Central Valley Flood System
Conservation Strategy

Locally-led Regional Flood
Management Plans



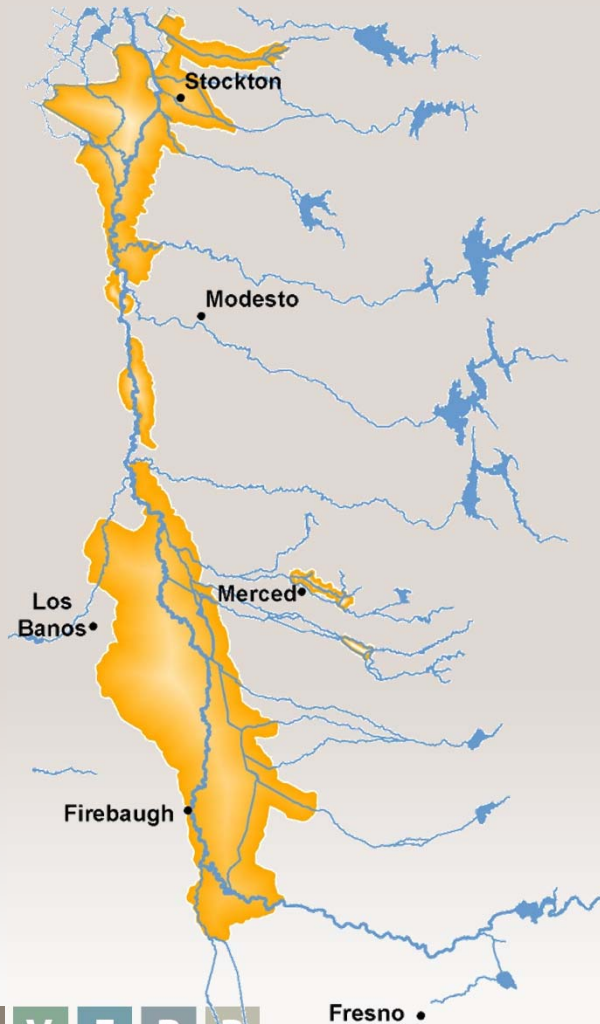
C V F P P

2017 ROADMAP

[TRACKING NUMBER]



BWFS Purpose and Scope



- Refine scale/location of system element and integrate environmental conservation
- Evaluate systemwide hydraulic and economic benefits/impacts, and ecosystem restoration opportunities
- Inform the 2017 CVFPP update and CVFPP Finance Plan

C V F P P

2017 ROADMAP

[TRACKING NUMBER]



Identify Problems/Needs

Set Objectives

Select Management Actions and Formulate Focused Approaches

Paradise Cut
Bypass

Floodplain
Transitory
Storage

Raise and Fix-in-
place Levees

Upstream
Storage

Evaluation (Screening)

Formulate Balanced Approach (contains promising elements of each Approach)

Config A

Config B

Config C

Refinements

Config A'

Config B'

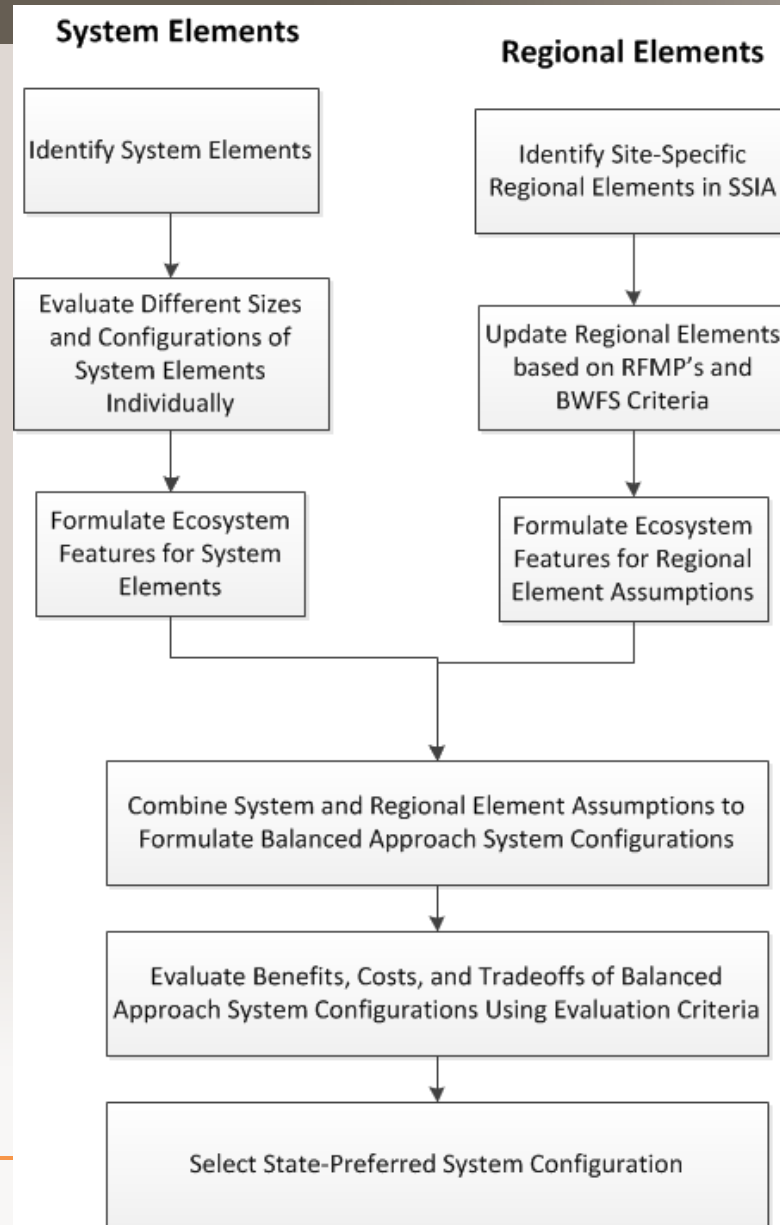
Config C'

Evaluate and Compare





Select Preferred
Plan



SJ BWFS System Configuration Development Process



Scale of San Joaquin Basin-Wide Feasibility Study

PROJECT LEVEL AND SCALE	EXAMPLES	HOW CVFPP INTEGRATES INFORMATION
<p>Systemwide Level Improvements with broad, cross-regional benefits</p> 	<ul style="list-style-type: none"> Upstream storage 	<p>Levels studied in SJ BWFS</p>
<p>Regional Level Projects with larger hydraulic and economic effects</p> 	<ul style="list-style-type: none"> Paradise Cut Firebaugh levee improvements Stockton levee improvements Three Amigos/Dos Rios transitory storage 	
<p>Local Level Projects with localized effects</p> 	<ul style="list-style-type: none"> Great Valley Grasslands State Park levee deauthorization RD 524 erosion protection RD 2031 resilience 	<p>All levels will be reflected in 2017 CVFPP</p>
<p>All Levels Compatible and complementary performance</p> 		

CE 002



2017 ROADMAP

[TRACKING NUMBER]

